

Etsiline CommPact

DRY AIR FOR NETWORKS, CABLES AND SIGNALS

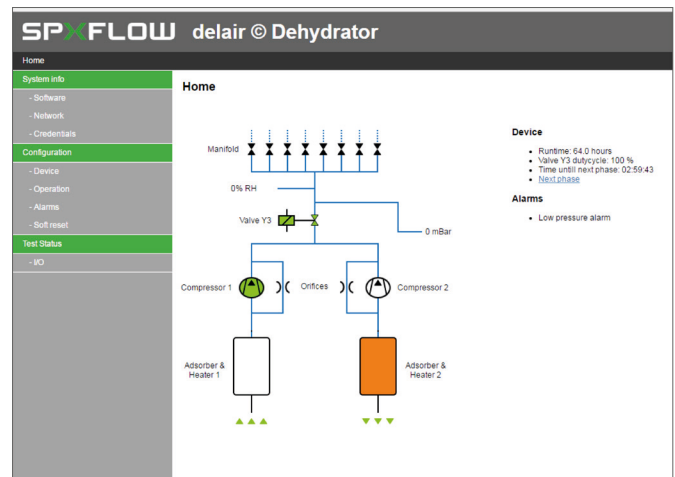
If moisture is your enemy, Delair® is your friend. We specialise in the design and development of pressurizers, ambient air, compressed air and gas conditioning equipment to protect electrical and electronic systems in telecommunications, broadcast, commercial and military applications.

By providing accurate humidity control, Delair® units preserve your equipment, prolong its working life and reduce maintenance requirements.



WHY DELAIR® ETSILINE COMPACT

- Internet communication / web interface
- No maintenance
- Compact design
- Standard 8 outlets, each with shut-off valve
- Dry air capacity > 120 l/h
- Low noise / low vibration
- Remote sense input
- Low energy consumption



Specifications	Etsiline CommPact 028 1400		
Operation	Fully automatic and continuous		
Dry air capacity (l/h) at 20 mbar	> 120		
Outlet dew point at 23°C and 83% RH	< -40 °C		
Standard working pressure (mbar)	20 - 30		
Power Supply (V)	48VDC		
Power consumption			
- Drying (W)	13		
- Regeneration (W)	55		
- Stand-by (W)	6		
- Sound level dB(A)	<43		
- Weight (kg)	8		
Outlets, with shut-off valve	8 Tubing 6/8 mm ID/OD		
Remote sense input	Included, electronic valve		
Location	Indoors		
Enclosure	IP20		
Ambient temperature	-10°C - +45°C		
Relative humidity	Max. 95%		
Mounting	Width (mm)	Depth (mm)	Height (mm)
- ETSI-Rack	535	200	88,9
- 19"-Rack	483	200	88,9
- Wall mounting (optional)	483	300	88,9
- Floor/Table mounting (optional)	483	300	93,0
Combined alarms, dry contact	Low-, high pressure, Run Time Humidity alarm (optional)		
Communication	TCP/IP Ethernet SNMP Dry contact SPDT		

Options	SPX FLOW Article
Adaptor 90-264VAC/48VDC	028 1544
Wall-Floor/Table mounting set	028 1565

SPXFLOW



SPX Flow Technology Etten-Leur BV
Munnikenheiweg 41 | 4879 NE Etten-Leur
P: +31 (0) 76 508 55 68 | F: +31 (0) 76 508 55 90
E: info.nl@spxflow.com
www.spxflow.com

SPX FLOW, Inc. reserves the right to incorporate our latest design and material changes without notice or obligation.

Design features, materials of construction and dimensional data, as described in this bulletin, are provided for your information only and should not be relied upon unless confirmed in writing. Please contact your local sales representative for product availability in your region. For more information visit www.spxflow.com.

The green 'X' and 'X' are trademarks of SPX FLOW, Inc.